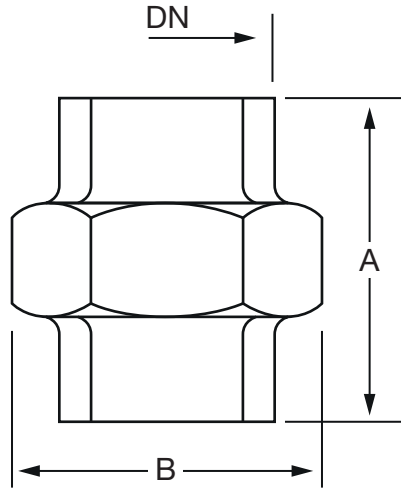


MALLEABLE IRON FEMALE THREADED UNION - E256



SIZE	DIMENSIONS(MM)	
DN	A	B
1/2"	42	32
3/8	45	36
1/2	49	42
3/4"	53	49
1"	58	57
1 1/4	64	68
1 1/2	68	76
2	75	92
2 1/2	84	111
3	92	125
4	107	155

Spherical Seat - Iron to Iron

Pressure ratings: PN25



UNLESS OTHERWISE SPECIFIED:
DIMENSIONS ARE IN MILLIMETERS



306 AVENIDA SALVADOR,
SAN CLEMENTE, CA92672, USA
E-mail: info@envotec.us, Web: www.envotec.us

DATE	01-29-18					DRG. TITLE	Malleable Iron Female Threaded Union - E256
REV.	01					PROJECT	-
DRAWN	AV					CONTRACTOR	-
DESIGNED	PD					DRG. NO.	ENV01292018-03
APPROVED	OD						
MFG	-						
Q.A							
						N.T.S	SHEET 1 OF 1

A4