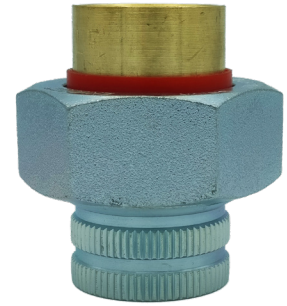


DIELECTRIC UNIONS, DUFF

SIZES: 1/2"-2" (15-50MM)

Series DUFF Dielectric Unions features a female steel pipe thread to female brass pipe thread connection. These unions are designed to be installed between pipes made from dissimilar metals to prevent accelerated corrosion and deterioration in the piping system due to galvanic and stray current. It consists of a union nut, two tail-pieces, a gasket & a sleeve that separates the tail-pieces to prevent an electric current from occurring. This series is ideal in applications such commercial and residential as hot water storage tanks, chilled water processing tanks, steam, gas, FCU's, AHU's and other water piping applications.



■ PRESSURE & TEMPERATURE

- Max. Working Pressure: 250 psi (17.2 bar)
- Max. Working Temperature: 180°F (82°C)

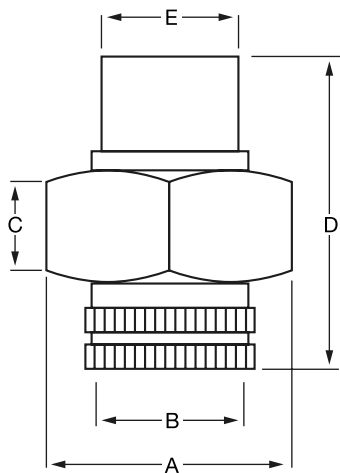
■ CONNECTION TYPE

Female Steel BSPT x Female Brass BSPT

■ MATERIALS

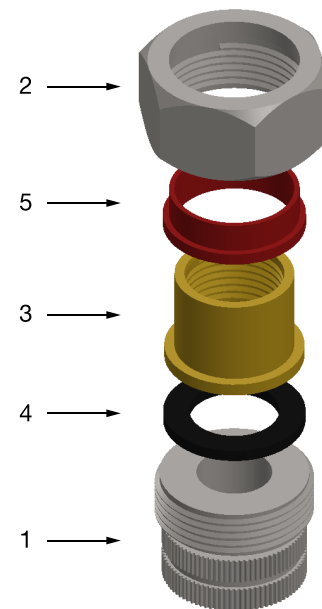
NO.	PART	MATERIAL
1	FPT Connection	Forged Steel (Electro Plated)
2	Nut	Forged Steel (Electro Plated)
3	FPT Connection	Brass /Copper
4	Gasket	EPDM
5	Insert	ABS

■ DIMENSIONS

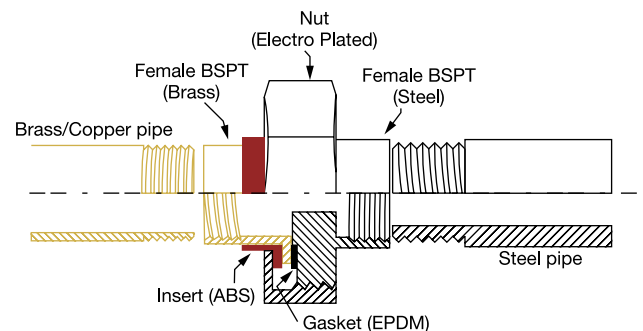


Dimensions in: Inches

SIZE	A	B	C	D	E
1/2"	1.84	0.83	0.77	2.79	1.01
3/4"	2.16	1.04	0.79	2.85	1.27
1"	2.60	1.31	0.88	3.42	1.52
1 1/4"	2.93	1.65	0.84	3.68	1.82
1 1/2"	3.72	1.88	0.86	3.80	2.13
2"	4.44	2.33	1.11	4.22	2.59



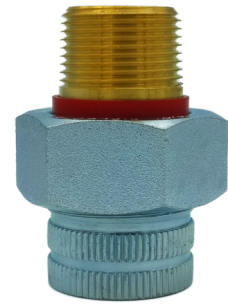
■ INSTALLATION



DIELECTRIC UNIONS, DUFM

SIZES: 1/2"-2"(15-50MM)

Series DUFM Dielectric Unions features a female steel pipe thread to male brass pipe thread connection. These unions are designed to be installed between pipes made from dissimilar metals to prevent accelerated corrosion and deterioration in the piping system due to galvanic and stray current. It consists of a union nut, two tail-pieces, a gasket & a sleeve that separates the tail-pieces to prevent an electric current from occurring. This series is ideal in application such commercial and residential as hot water storage tanks, chilled water processing tanks, steam, gas, FCU's, AHU's and other water piping applications.



PRESSURE & TEMPERATURE

- Max. Working Pressure: 250 psi (17.2 bar)
- Max. Working Temperature: 180°F (82°C)

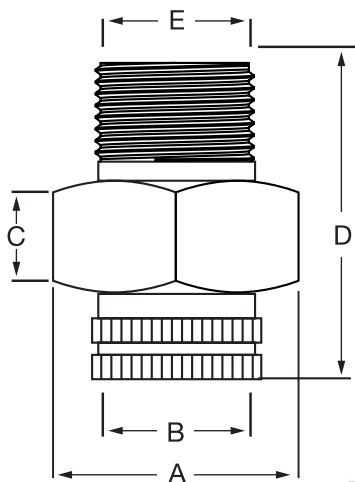
CONNECTION TYPE

Steel Female BSPT x Brass Male BSPT

MATERIALS

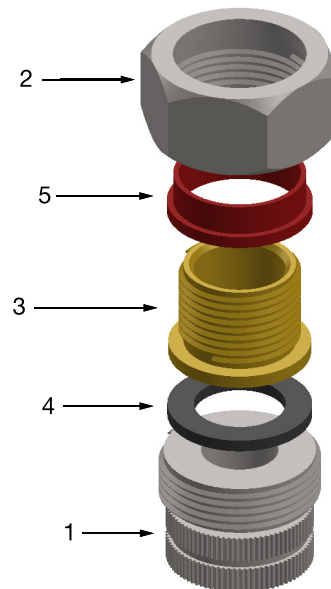
NO.	PART	MATERIAL
1	FPT Connection	Forged Steel (Electro Plated)
2	Nut	Forged Steel (Electro Plated)
3	MPT Connection	Brass /Copper
4	Gasket	EPDM
5	Insert	ABS

DIMENSIONS

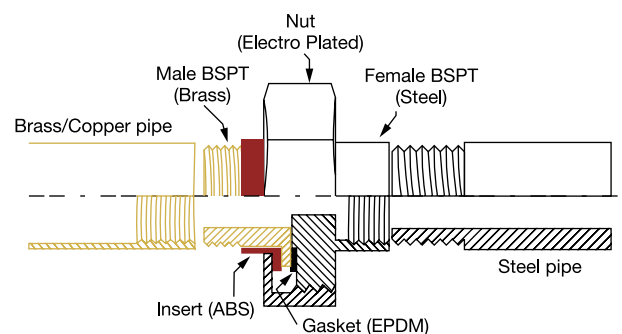


Dimensions in: Inches

SIZE	A	B	C	D	E
1/2"	1.84	0.83	0.77	2.79	1.01
3/4"	2.16	1.04	0.79	2.85	1.27
1"	2.60	1.31	0.88	3.42	1.52
1 1/4"	2.93	1.65	0.84	3.68	1.82
1 1/2"	3.72	1.88	0.86	3.80	2.13
2"	4.44	2.33	1.11	4.22	2.59



INSTALLATION



DIELECTRIC UNIONS, DUFC

SIZES: 1/2"-2"(15-50MM)

Series DUFC Dielectric Unions features a female steel pipe thread to solder brass / copper connection. These unions are designed to be installed between pipes made from dissimilar metals to prevent accelerated corrosion and deterioration in the piping system due to galvanic and stray current. It consists of a union nut, two tail- pieces, a gasket & a sleeve that separates the tail- pieces to prevent an electric current from occurring. This series is ideal in application such commercial and residential as hot water storage tanks, chilled water processing tanks, steam, gas, FCU's, AHU's and other water piping applications.



■ PRESSURE & TEMPERATURE

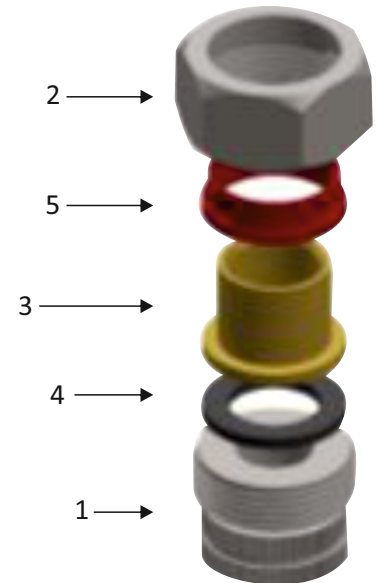
- Max. Working Pressure: 250 psi (17,2 bar)
- Max. Working Temperature: 180°F (82°C)

■ CONNECTION TYPE

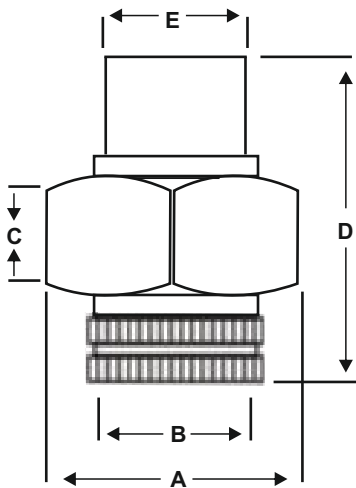
- Female Steel BSPT x Brass Solder

■ MATERIALS

NO.	PART	MATERIAL
1	FPT Connection	Forged Steel (Electro Plated)
2	Nut	Forged Steel (Electro Plated)
3	Solder Connection	Brass /Copper
4	Gasket	EPDM
5	Insert	ABS

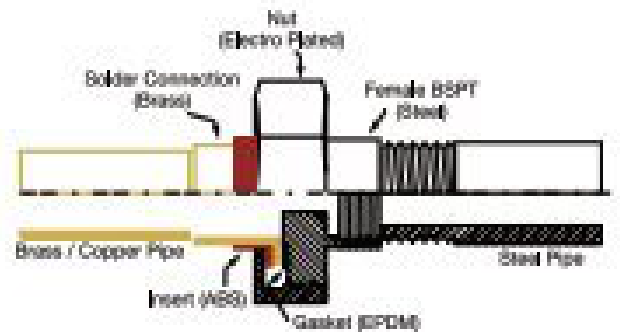


■ DIMENSIONS



SIZE	A	B	C	D	E
1/2"	1,41	1,04	0,74	1,85	0,82
3/4"	1,60	1,26	0,72	2,11	1,07
1"	1,88	1,54	0,86	2,33	1,29
1 1/4"	2,26	1,81	0,91	2,66	1,57
1 1/2"	2,74	2,12	0,99	2,74	1,83
2"	3,49	2,59	1,09	3,11	2,35

■ INSALLATION



DIELECTRIC UNIONS, DUFF-SS

SIZES: 1/2" - 2" (15-50MM)

Series DUFF-SS Dielectric Unions features a female steel pipe thread connection. These unions are designed to be installed between pipes made from dissimilar metals to prevent accelerated corrosion and deterioration in the piping system due to galvanic and stray current. It consists of a union nut, two tail- pieces, a gasket & a sleeve that separates the tail- pieces to prevent an electric current from occurring. This series is ideal in applications such commercial and residential as hot water storage tanks, chilled water processing tanks, steam, gas, FCU's, AHU's and other water piping applications.



■ PRESSURE & TEMPERATURE

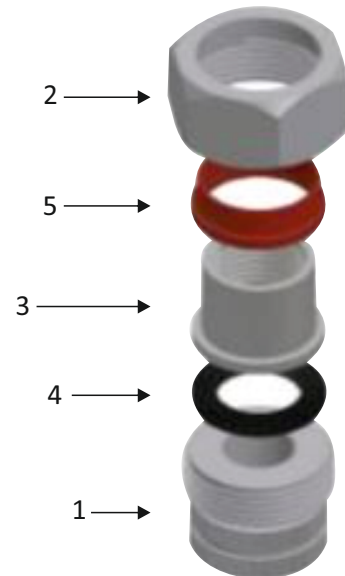
- Max. Working Pressure: 250 psi (17,2 bar)
- Max. Working Temperature: 180°F (82° C)

■ CONNECTION TYPE

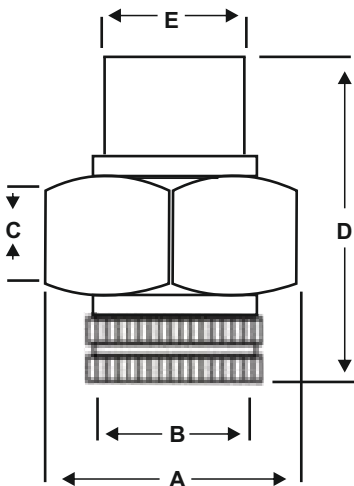
- Female Steel BSPT x Stainless Steel BSPT

■ MATERIALS

NO.	PART	MATERIAL
1	FPT Connection	Forged Steel (Electro Plated)
2	Nut	Forged Steel (Electro Plated)
3	FPT Connection	Stainless Steel
4	Gasket	EPDM
5	Insert	ABS

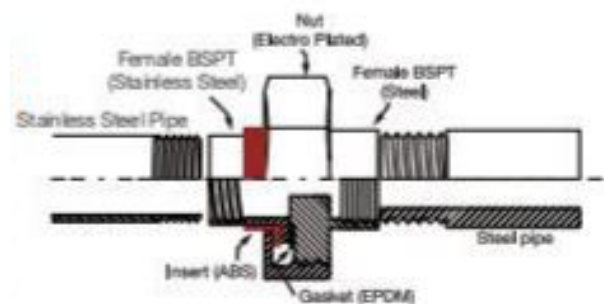


■ DIMENSIONS



SIZE	A	B	C	D	E
1/2"	1,84	0,83	0,77	2,79	1,01
3/4"	2,16	1,04	0,79	2,85	1,27
1"	2,60	1,31	0,88	3,42	1,52
1 1/4"	2,93	1,65	0,84	3,68	1,82
1 1/2"	3,72	1,88	0,86	3,80	2,13
2"	4,44	2,33	1,11	4,22	2,59

■ INSALLATION



DIELECTRIC UNIONS, DUMC

SIZES: 1/2"-2"(15-50MM)

Series DUMC Dielectric Unions features a male steel pipe thread to solder brass connections. These unions are designed to be installed between pipes made from dissimilar metals to prevent accelerated corrosion and deterioration in the piping system due to galvanic and stray current. It consists of a union nut, two tail- pieces, a gasket & a sleeve that separates the tail pieces to prevent an electric current from occurring. This series is ideal in application such commercial and residential as hot water storage tanks, Chilled water processing tanks, Steam, gas, FCU's, AHU's and other water piping applications.



■ PRESSURE & TEMPERATURE

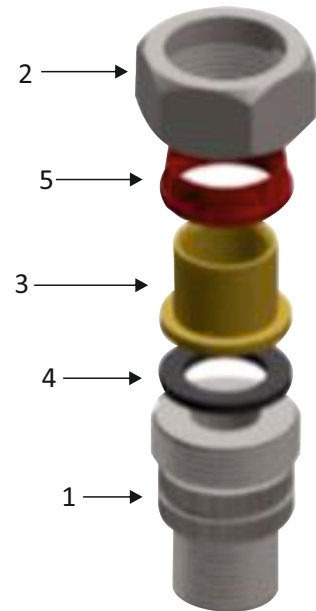
- Max. Working Pressure: 250 psi (17,2 bar)
- Max. Working Temperature: 180°F (82° C)

■ CONNECTION TYPE

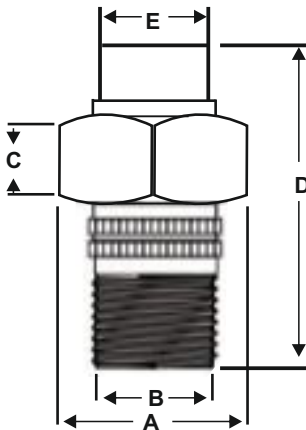
- Male Steel BSPT x Brass Solder

■ MATERIALS

NO.	PART	MATERIAL
1	MPT Connection	Forged Steel (Electro Plated)
2	Nut	Forged Steel (Electro Plated)
3	Solder Connection	Brass/ Copper
4	Gasket	EPDM
5	Insert	ABS

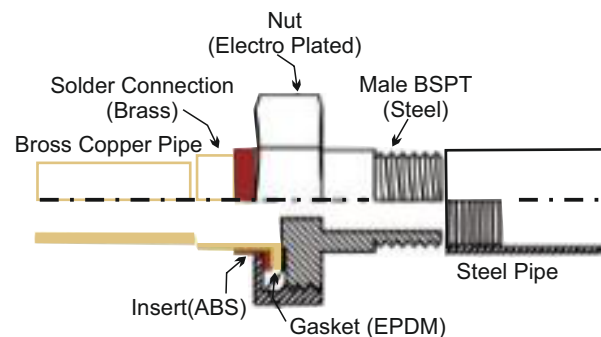


■ DIMENSIONS



SIZE	A	B	C	D	E
1/2"	1,41	1,04	0,72	1,85	0,82
3/4"	1,60	1,25	0,72	2,11	1,07
1"	1,88	1,54	0,86	2,33	1,29
1 1/4"	2,26	1,81	0,91	2,66	1,57
1 1/2"	2,74	2,12	0,99	2,74	1,83
2"	3,49	2,59	1,09	3,11	2,35

■ INSALLATION



DIELECTRIC UNIONS, DUMM

SIZES: 1/2"-2" (15-50MM)

Series DUMM Dielectric Unions features a male steel pipe thread to a male brass pipe thread connection. These unions are designed to be installed between pipes made from dissimilar metals to prevent accelerated corrosion and deterioration in the piping system due to galvanic and stray current. It consists of a union nut, two tail- pieces, a gasket & a sleeve that separates the tail- pieces to prevent an electric current from occurring. This series is ideal in application such commercial and residential as hot water storage tanks, Chilled water processing tanks, Steam, gas, FCU's, AHU's and other water piping applications.



■ PRESSURE & TEMPERATURE

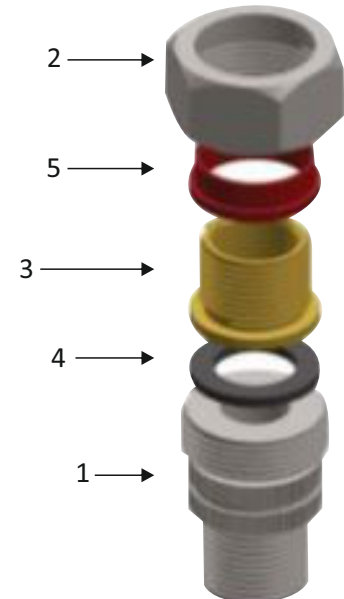
- Max. Working Temperature: 180°F (82°C)
- Max. Working Pressure: 250 psi (17,2 bar)

■ CONNECTION TYPE

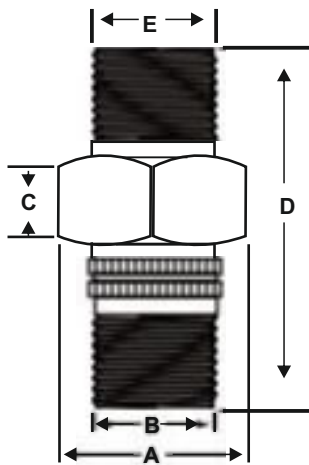
- Male Steel BSPT x Male Brass BSPT

■ MATERIALS

NO.	PART	MATERIAL
1	MPT Connection	Forged Steel (Electro Plated)
2	Nut	Forged Steel (Electro Plated)
3	MPT Connection	Brass /Copper
4	Gasket	EPDM
5	Insert	ABS



■ DIMENSIONS



SIZE	A	B	C	D	E
1/2"	1,40	0,85	0,76	3,30	0,83
3/4"	1,62	1,07	0,78	3,35	1,06
1"	1,88	1,30	0,86	3,72	1,30
1 1/4"	2,28	1,68	0,93	4,13	1,65
1 1/2"	3,48	1,91	1,06	4,30	1,89
2"	3,48	2,40	1,06	4,45	2,36

■ INSALLATION

