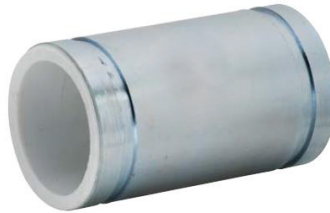


# DIELECTRIC NIPPLES, DN series



Thread x Thread



Groove x Groove



Thread x Groove

## SPECIFICATIONS

- Max. Working Pressure: 300psi (20.6 bar)
- Max. Working Temperature: 230°F (110°C)
- Conforms to ASTM A53, ANSI B1.20.1
- Galvanized Dielectric Nipples
- PE or Pex Liner
- Metal to Metal design

### THREAD x THREAD

PART NO.	SIZE(INCH)
DN1001	1/2x2-1/2
DN1002	1/2x3
DN1003	3/4x2
DN1004	3/4x2-1/2
DN1005	3/4x3
DN1006	3/4x4
DN1007	1x2-1/2
DN1008	1x3
DN1009	1x4
DN1010	1-1/4x4
DN1011	1-1/2x4
DN1012	2x4
DN1013	2-1/2x6
DN1014	3x6
DN1015	3-1/2x6
DN1016	4x6

### GROOVE x GROOVE

PART NO.	SIZE(INCH)
DN2001	1x4
DN2002	1-1/4x4
DN2003	1-1/2x4
DN2004	2x4
DN2005	2-1/2x6
DN2006	3x6
DN2007	3-1/2x6
DN2008	4x6

### THREAD x GROOVE

PART NO.	SIZE(INCH)
DN3001	2x4
DN3002	2-1/2x6
DN3003	3x6
DN3004	4x6