

DIELECTRIC FLANGE PIPE FITTINGS SERIES- E300, SIZES: 2½”-6”

Series E300 Dielectric Ranged Pipe Fittings feature as a companion of steel flange to bronze flange. These fittings are designed to be installed between pipe made from dissimilar metals to prevent accelerated corrosion and deterioration in the piping system due to galvanic and stray current.

FEATURES

- Steel flange to Bronze flange.
- Flange PN16 or ANSI 150.
- Designed and manufactured to te highest quality standards.
- Threaded Female NPT /Female BSPT /Solder Ends

PRESSURE & TEMPERATURE

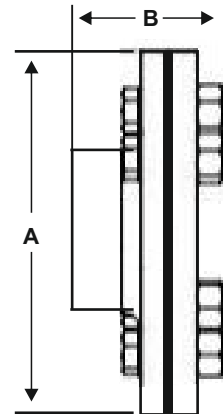
- Max. Working Pressure: 363 psi (25 bar)
- Max. Working Temperature: 120°C (248°F)

SPECIFICATIONS

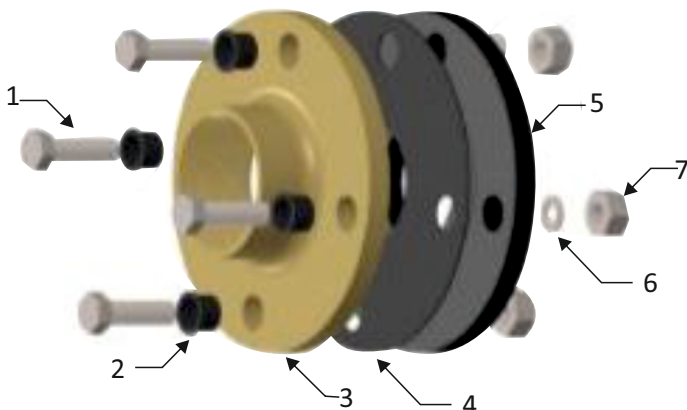
- Steel Flange PN16 or ANSI 150 with Female NPT or Female BSPT or Solder ends.
- Bronze Flange PN16 or ANSI150 with Female NPT or Female BSPT or Solder ends.
- EPDM Gasket, Gauge: 1/8” (3,18 mm) for use in steam or hot water or cold water.

WEIGHT & DIMENSIONS

SIZE (DN)		A		B		WEIGHT	
IN.	MM	IN.	MM	IN.	MM	IN.	MM
2½	65	7	178	3½	89	12	5,4
3	80	7½	190	3¾	95	14	6,4
4	100	9	229	4¾	111	30	13,6
6	150	11	280	6	153	42	19,2



MATERIALS



NO.	PART	MATERIAL
1	Bolt	Galvanized Steel
2	Bolt Insulations	ABS
3	Flange	Bronze
4	Gasket	Nylon Reinforced EPDM
5	Companion Flange	Steel
6	Washer	Galvanized Steel
7	Nut	Galvanized Steel